

2.3.2: Percentage of teachers integrating ICT (excluding use of PPT) for effective teaching with Learning Management Systems (LMS), Swayam Prabha, e-Learning Resources and others during the last five years

Any other relevant information

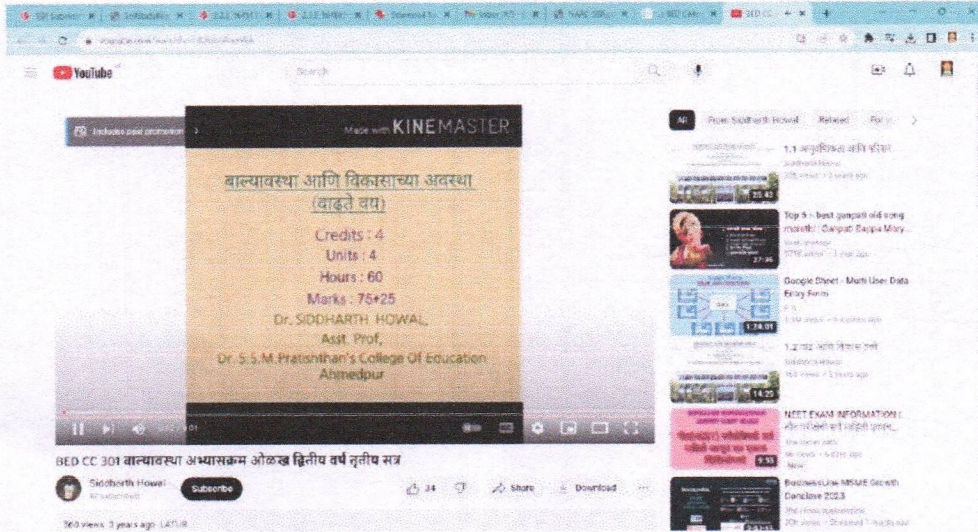
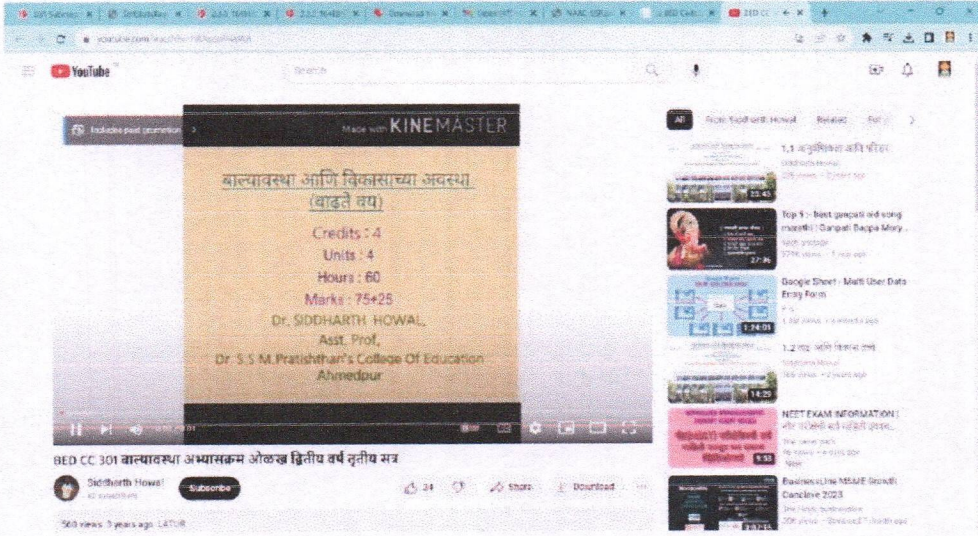


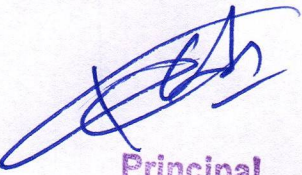
# Sahayog Sevabhavi Sanstha COLLEGE OF EDUCATION

Vishnupuri, Nanded. – 431606. (Maharashtra)



(Recognized By the UGC U/s 2(f) and 12(B) & Affiliated to Swami Ramanand Teerth Marathwada University, Nanded.)



  
Principal  
Sahayog Sevabhavi Sanstha  
College of Education  
Vishnupuri, Nanded.

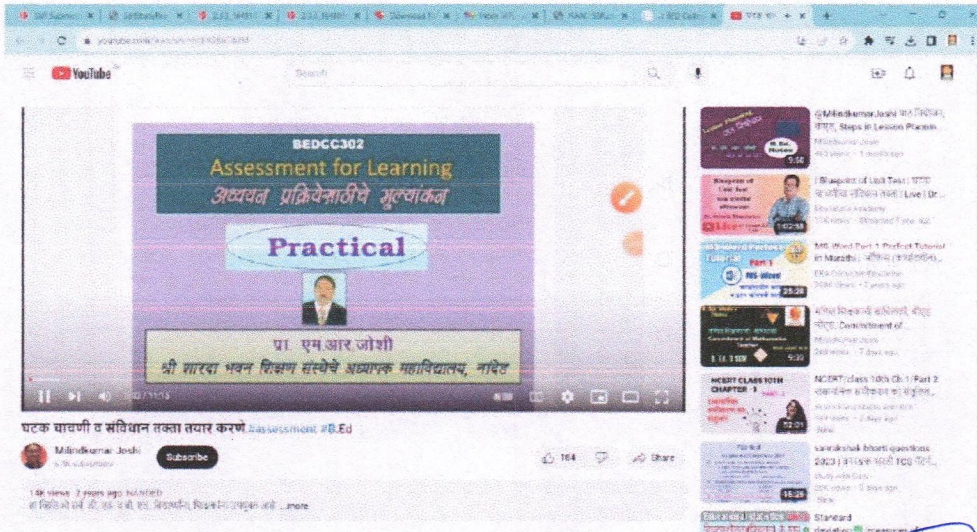
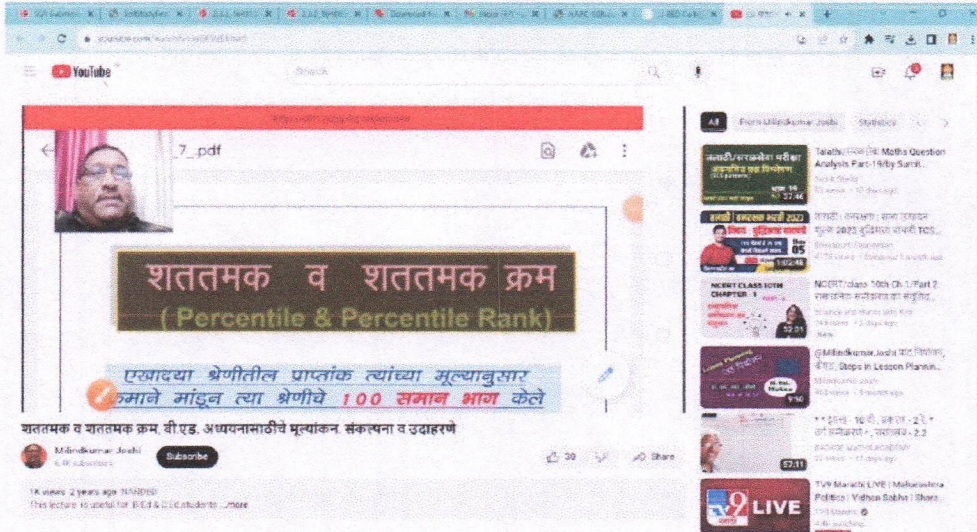


# Sahayog Sevabhavi Sanstha COLLEGE OF EDUCATION



Vishnupuri, Nanded. – 431606. (Maharashtra)

(Recognized By the UGC U/s 2(f) and 12(B) & Affiliated to Swami Ramanand Teerth Marathwada University, Nanded.)



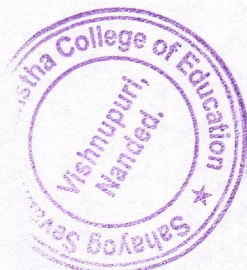
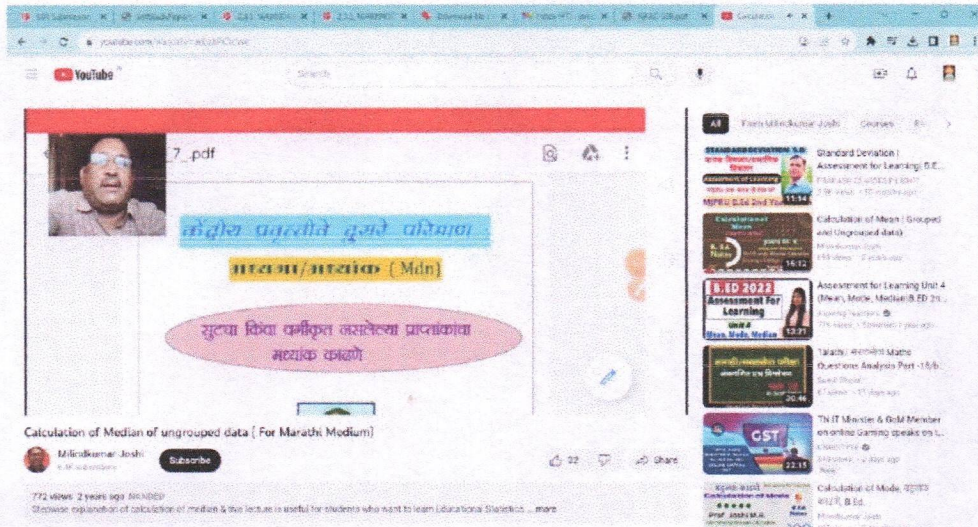
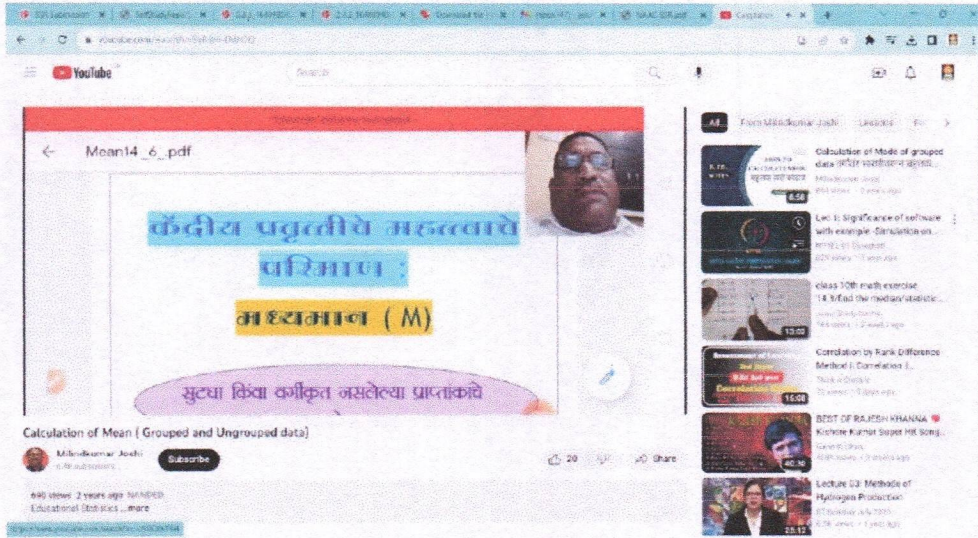
*(Signature)*  
Principal  
Sahayog Sevabhavi Sanstha  
College of Education  
Vishnupuri, Nanded.



# Sahayog Sevabhavi Sanstha COLLEGE OF EDUCATION

Vishnupuri, Nanded. – 431606. (Maharashtra)

(Recognized By the UGC U/s 2(f) and 12(B) & Affiliated to Swami Ramanand Teerth Marathwada University, Nanded.)



*[Signature]*  
Principal  
Sahayog Sevabhavi Sanstha  
College of Education  
Vishnupuri, Nanded.

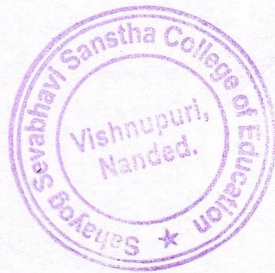
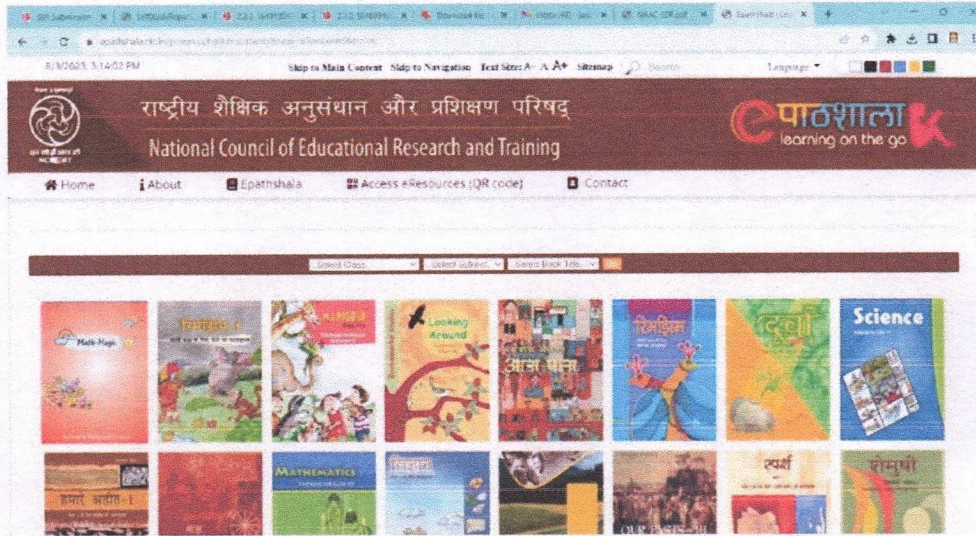
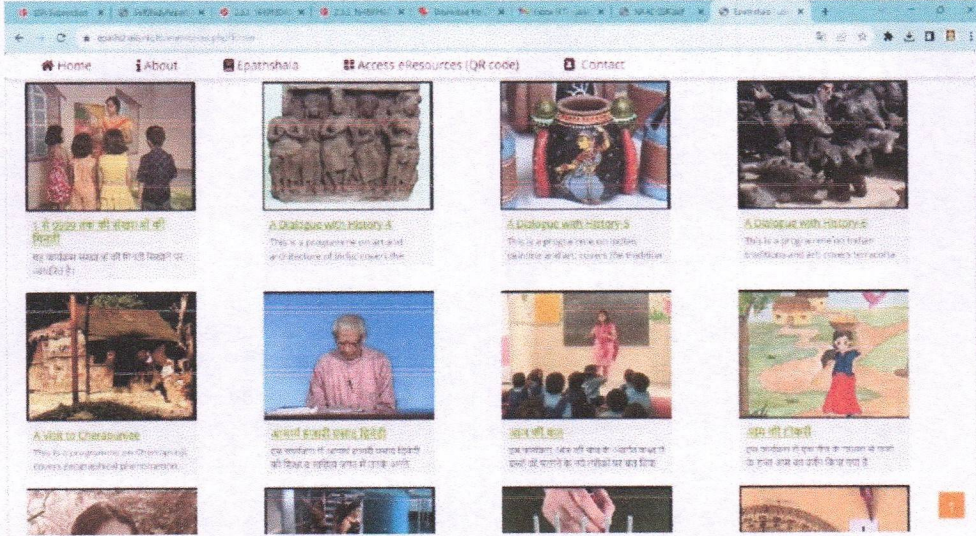


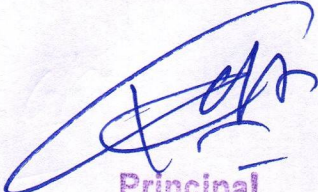
# Sahayog Sevabhavi Sanstha COLLEGE OF EDUCATION

Vishnupuri, Nanded. – 431606. (Maharashtra)



(Recognized By the UGC U/s 2(f) and 12(B) & Affiliated to Swami Ramanand Teerth Marathwada University, Nanded.)



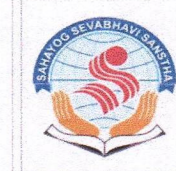
  
Principal  
Sahayog Sevabhavi Sanstha  
College of Education  
Vishnupuri, Nanded.



# Sahayog Sevabhavi Sanstha COLLEGE OF EDUCATION

Vishnupuri, Nanded. – 431606. (Maharashtra)

(Recognized By the UGC U/s 2(f) and 12(B) & Affiliated to Swami Ramanand Teerth Marathwada University, Nanded.)

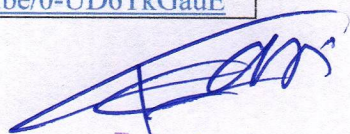


Source from S.R.T.M.U.Nanded

Developed By: Joshi M.R. Assistant Professor, Shri Sharda Bhavan Education Society's college of Education, Nanded.

Program	Subject	Class	Semester	Paper	Unit	Unit Name	Content	YouTube Link
B.Ed . General	Education	II	III	BEDC C302	4	Interpreting Test Scores	Calculation of Mean (Grouped and Ungrouped data)	<a href="https://youtu.be/BxRBm-DWiOQ">https://youtu.be/BxRBm-DWiOQ</a>
B.Ed . General	Education	II	III	BEDC C302	4	Interpreting Test Scores	Calculation of Median of Ungrouped Data	<a href="https://youtu.be/asbzhPCvcWc">https://youtu.be/asbzhPCvcWc</a>
B.Ed . General	Education	II	III	BEDC C302	4	Interpreting Test Scores	Calculation of Mode of grouped data	<a href="https://youtu.be/trQ5Z5GLQU4">https://youtu.be/trQ5Z5GLQU4</a>
B.Ed . General	Education	II	III	BEDC C302	4	Interpreting Test Scores	Calculation of Mean	<a href="https://youtu.be/BvV18TooxOU">https://youtu.be/BvV18TooxOU</a>
B.Ed . General	Education	II	III	BEDC C302	4	Interpreting Test Scores	Normal Probability Curve	<a href="https://youtu.be/UG9ZTaztMAQ">https://youtu.be/UG9ZTaztMAQ</a>
B.Ed . General	Education	II	III	BEDC C302	4	Interpreting Test Scores	Percentile - Concept and Mathematical problems.	<a href="https://youtu.be/kr6RVzBkhw0">https://youtu.be/kr6RVzBkhw0</a>
B.Ed	Education	II	III	BEDC	1	Process	Educatio	<a href="https://youtu.be/0-UD6TkGauE">https://youtu.be/0-UD6TkGauE</a>



  
Principal  
Sahayog Sevabhavi Sanstha  
College of Education  
Vishnupuri, Nanded.



# Sahayog Sevabhavi Sanstha

## COLLEGE OF EDUCATION



Vishnupuri, Nanded. – 431606. (Maharashtra)

(Recognized By the UGC U/s 2(f) and 12(B) & Affiliated to Swami Ramanand Teerth Marathwada University, Nanded.)

General	tion			C302		of Evaluati on	nal Evaluati on	
B.Ed General	Educa tion	II	III	BEDC C302	Pract ical	Practical	Assessm ent for Learnin g - Practical	<a href="https://youtu.be/HtF8SReT4dM">https://youtu.be/HtF8SReT4dM</a>

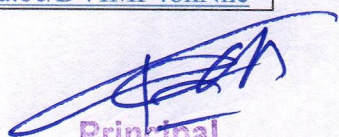
Developed By: Dr. Kiran Shivajirao Paikrao, Saraswati College of Education, Kinwat

Prog ram	Subje ct	Cl ass	Sem ester	Paper	Unit	Unit Name	Content	YouTube Link
B.Ed General	Child hood & Grow ing up	II	III	BEDC C301	1	Growth & Develop ment	Introduc tion of growth & develop ment	<a href="https://youtu.be/s-j4BEh_T3V">https://youtu.be/s-j4BEh_T3V</a>
B.Ed General	Child hood & Grow ing up	II	III	BEDC C301	1	Growth & Develop ment	Introduc tion of growth & develop ment	<a href="https://youtu.be/sVAQVa90Xls">https://youtu.be/sVAQVa90Xls</a>
B.Ed General	Child hood & Grow ing up	I	I	BEDC C103	1	Concept of educatio n	Educatio n Meaning & Nature	<a href="https://youtu.be/H6rHCqDAQru">https://youtu.be/H6rHCqDAQru</a>
B.Ed General	Child hood & Grow ing up	II	III	BEDC C301	1	Indian society & educatio n	Concept & Nature	<a href="https://81UrRmga7au">https://81UrRmga7au</a>
B.Ed General	Child hood & Grow ing up	II	III	MCQ		Online sum.exa m.2020	MCQ All Paper	<a href="https://youtu.be/-9NQ78qz56k">https://youtu.be/-9NQ78qz56k</a>

Developed By: Dr. R.S. Moterao, Saraswati College of Education, Kinwat

Prog ram	Subje ct	Cl ass	Sem ester	Paper	Unit	Unit Name	Content	YouTube Link
B.Ed	Educa	I	I	BEDC	1	School	Element	<a href="https://youtu.be/DVIMP4ohNnc">https://youtu.be/DVIMP4ohNnc</a>



  
Principal  
Sahayog Sevabhavi Sanstha  
College of Education  
Vishnupuri, Nanded.



# Sahayog Sevabhavi Sanstha

## COLLEGE OF EDUCATION



Vishnupuri, Nanded. – 431606. (Maharashtra)

(Recognized By the UGC U/s 2(f) and 12(B) & Affiliated to Swami Ramanand Teerth Marathwada University, Nanded.)

General	tion			C102		Management	s of School Management	
---------	------	--	--	------	--	------------	------------------------	--


Developed By: Prof. R.K. Shinde, Saraswati College of Education, Kinwat

Program	Subject	Class	Semester	Paper	Unit	Unit Name	Content	YouTube Link
B.Ed . General	Education	II	III	BEDC C302	1	Process of Evaluation	Characteristics of Evaluation	<a href="https://youtu.be/INLpdj08c5A">https://youtu.be/INLpdj08c5A</a>

Developed By: Dr. Siddharth Sudhakar Rao Howal, Assistant Professor, Dr. S.S.M.Pratishtan's College Of Education, Ahmedpur

Program	Subject	Class	Semester	Paper	Unit	Unit Name	Content	YouTube Link
B.Ed .	Education	I	III	BEDC C301	All	Syllabus Introduction	Syllabus Introduction	<a href="https://youtu.be/hRASooRwsWA">https://youtu.be/hRASooRwsWA</a>
B.Ed .	Education	I	III	BEDC C301	1	Understanding the growth and development of the learner	Heridity and environment : Meaning, Nature, importance in teaching learning process.	<a href="https://youtu.be/eTww4pootUw">https://youtu.be/eTww4pootUw</a>
B.Ed .	Education	I	III	BEDC C301	1	Understanding the growth and development of the learner	Principles of growth and development	<a href="https://youtu.be/1O2L_-4G29I">https://youtu.be/1O2L_-4G29I</a>
B.Ed .	Education	I	III	BEDC C301	1	Understanding the growth and development of the learner	Relationship between development and learning	<a href="https://youtu.be/eTww4pootUw">https://youtu.be/eTww4pootUw</a>
B.Ed .	Child hood and Growing Up	I	III	BEDC C301	1	Understanding the growth and development of the learner	Adolescence stage: (Physical, Mental, emotional Moral and social aspects.)	<a href="https://youtu.be/XoB5rrzNmJE">https://youtu.be/XoB5rrzNmJE</a>
B.Ed .	Education	I	III	BEDC C301	1	Understanding the growth and development of the learner	Facilitating holistic development : Implication for education (Social, teacher, parents)	<a href="https://youtu.be/8vJlZWzI7ig">https://youtu.be/8vJlZWzI7ig</a>



  
Principal  
Sahayog Sevabhavi Sanstha  
College of Education  
Vishnupuri, Nanded.





# Sahayog Sevabhavi Sanstha COLLEGE OF EDUCATION

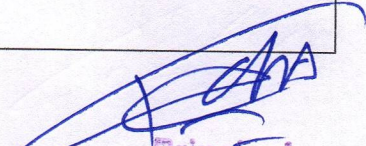
Vishnupuri, Nanded. – 431606. (Maharashtra)



(Recognized By the UGC U/s 2(f) and 12(B) & Affiliated to Swami Ramanand Teerth Marathwada University, Nanded.)

							w.r. to adolescence stage	
B.Ed	Educa tion	I	III	BEDC C301	1	Understand g the growth and development of the learner	Theories of development : Jean Piaget's (Cognitive)	<a href="https://youtu.be/wALqLXcolyo">https://youtu.be/wALqLXcolyo</a>
B.Ed	Educa tion	I	III	BEDC C301	1	Understand g the growth and development of the learner	heories of development : Kohalberg's (Moral Developmen t)	<a href="https://youtu.be/s7vhfNJxs44">https://youtu.be/s7vhfNJxs44</a>
B.Ed	Educa tion	I	III	BEDC C301	2	Individual differences and Personality	Individual differences	<a href="https://youtu.be/VoF_tvD0FJI">https://youtu.be/VoF_tvD0FJI</a>
B.Ed	Educa tion	I	III	BEDC C301	2	Individual differences and Personality	Individual differences- Special needs of excecptional children.	<a href="https://youtu.be/KbYWE1bcwT4">https://youtu.be/KbYWE1bcwT4</a>
B.Ed	Educa tion	I	III	BEDC C301	2	Individual differences and Personality	Meaning Concept, nature & Types of Personality	<a href="https://youtu.be/jMcAFmGf_6M">https://youtu.be/jMcAFmGf_6M</a>
B.Ed	Educa tion	I	III	BEDC C301	2	Individual differences and Personality	Factors affecting development of personality	<a href="https://youtu.be/o_mmin1L44M">https://youtu.be/o_mmin1L44M</a>
B.Ed	Educa tion	I	III	BEDC C301	2	Individual differences and Personality	Theories of Personality - Sigman Frauied	<a href="https://youtu.be/WkDPpZc6-Lo">https://youtu.be/WkDPpZc6-Lo</a>
B.Ed	Educa tion	I	III	BEDC C301	3	Education and Learner Diversity in classroom	Meaning and concept of learning styles	<a href="https://youtu.be/6TE-M7CPdEk">https://youtu.be/6TE-M7CPdEk</a>
B.Ed	Educa tion	I	III	BEDC C301	3	Education and Learner Diversity in classroom	Meaning and concept of multicultural ism	<a href="https://youtu.be/Tgpa04nDZZU">https://youtu.be/Tgpa04nDZZU</a>
B.Ed	Educa tion	I	III	BEDC C301	3	Education and Learner Diversity in classroom	Role of the teacher in a multicultural classroom.	<a href="https://youtu.be/SnEsBaX1TTs">https://youtu.be/SnEsBaX1TTs</a>
B.Ed	Educa tion	I	III	BEDC C301	4	Political, social and cultural domain and childhood and growing up.	Meaning and implications of social domain on childhood and growing up.	<a href="https://youtu.be/OUzxbq-M3_k">https://youtu.be/OUzxbq-M3_k</a>
B.Ed	Educa tion	I	III	BEDC C301	4	Political, social and cultural domain and childhood and growing up.	Meaning and implications of social domain on childhood and growing up.	<a href="https://youtu.be/IfXydmkJ9hU">https://youtu.be/IfXydmkJ9hU</a>



  
Principal  
Sahayog Sevabhavi Sanstha  
College of Education  
Vishnupuri, Nanded.



# Sahayog Sevabhavi Sanstha

## COLLEGE OF EDUCATION



Vishnupuri, Nanded. – 431606. (Maharashtra)

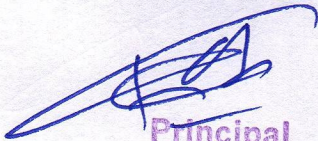
(Recognized By the UGC U/s 2(f) and 12(B) & Affiliated to Swami Ramanand Teerth Marathwada University, Nanded.)

B.Ed	Educa tion	I	III	BEDC C301	4	Political, social and cultural domain and childhood and growing up.	up. Meaning and implications of social domain on childhood and growing up.	<a href="https://youtu.be/zGI_e438HA8">https://youtu.be/zGI_e438HA8</a>
B.Ed	Educa tion	I	III	BEDC C301	4	Political, social and cultural domain and childhood and growing up.	Impact of media on childhood and growing up.	<a href="https://youtu.be/kTo0fnU3O0w">https://youtu.be/kTo0fnU3O0w</a>

Developed By: Kabnure Shahanaj K., Assistant Professor, Dr. S.S.M.Pratishthan's College Of Education, Ahmedpur.

Prog ram	Subje ct	Cl ass	Sem ester	Paper	Unit	Unit Name	Content	YouTube Link
B.Ed	Educa tion	I	III	BEDC C302	All	Syllabus Introduct ion	Syllabus Introduc tion	<a href="https://www.youtube.com/watch?v=pYQActRD-XQ">https://www.youtube.com/watch?v=pYQActRD-XQ</a>
B.Ed	Educa tion	I	III	BEDC C302	1	Process of Evaluati on	Concept: Measurement, Assessment and Evaluation in Education – and its Relationship	<a href="https://www.youtube.com/watch?v=x9rvtqTwCSU">https://www.youtube.com/watch?v=x9rvtqTwCSU</a>
B.Ed	Educa tion	I	III	BEDC C302	1	Process of Evaluati on	Taxonomy of instructional objectives (Revised Blooms Taxonomy and R.H. Dave) and its importance.	<a href="https://www.youtube.com/watch?v=bTHBZeb5THU">https://www.youtube.com/watch?v=bTHBZeb5THU</a>
B.Ed	Educa tion	I	III	BEDC C302	1	Process of Evaluati on	Principles of Evaluation, Educational objectives and learning outcomes.	<a href="https://www.youtube.com/watch?v=T8xhZUKWWYA">https://www.youtube.com/watch?v=T8xhZUKWWYA</a>
B.Ed	Educa tion	I	III	BEDC C302	1	Process of Evaluati on	Criteria for selection of a good learning experiences and Types of Learning experience, criteria for selection good learning experience.	<a href="https://www.youtube.com/watch?v=HYkFqViSjxE">https://www.youtube.com/watch?v=HYkFqViSjxE</a>
B.Ed	Educa tion	I	III	BEDC	1	Process	Relationship	<a href="https://www.youtube.com/watch">https://www.youtube.com/watch</a>



  
Principal  
Sahayog Sevabhavi Sanstha  
College of Education  
Vishnupuri, Nanded.



Sahayog Sevabhavi Sanstha

# COLLEGE OF EDUCATION

Vishnupuri, Nanded. – 431606. (Maharashtra)



(Recognized By the UGC U/s 2(f) and 12(B) & Affiliated to Swami Ramanand Teerth Marathwada University, Nanded.)

.	tion		C302	of Evaluati on	between educational objectives, learning experiences, content and evaluation.	<a href="https://www.youtube.com/watch?v=HYkFqViSJxE">?v=HYkFqViSJxE</a>
---	------	--	------	----------------------	---	--



Principal  
Sahayog Sevabhavi Sanstha  
College of Education  
Vishnupuri, Nanded.